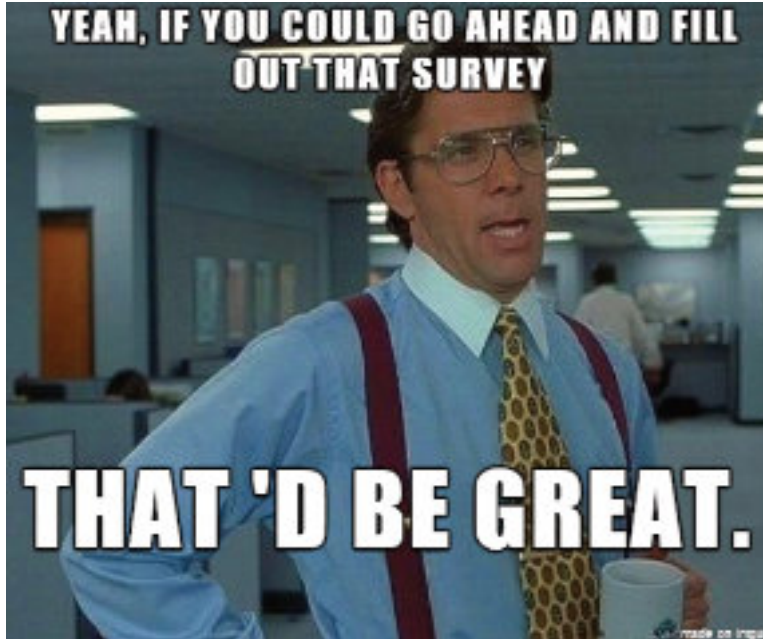


# Event Survey



You're looking at your phone anyway, so please take our Rains to Bay survey!

[tinyurl.com/SSVRTB](https://tinyurl.com/SSVRTB)

# Andrew (Drew) Clark

SSV Board Chair



# Quick Pitches



**Valley Water**

Neeta Bijoor



**AkwaMag**

Tuyen Vo



**Gachina**

Cristina Prevarin



**Tanner  
Pacific**

Joel Cabrera



# Valley Water

Clean Water • Healthy Environment • Flood Protection

# Get Your Business WET!



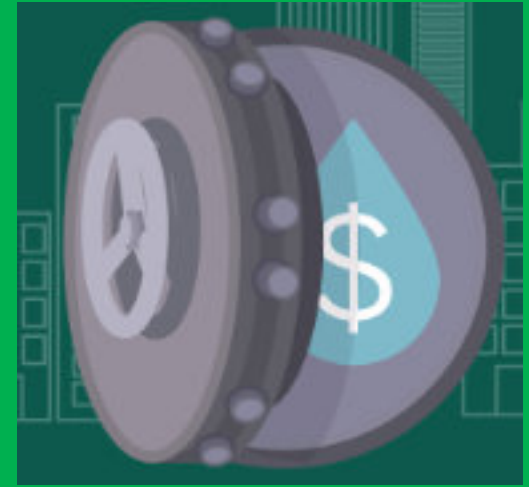
**Valley Water**

Clean Water • Healthy Environment • Flood Protection

**Water Efficient Technology**

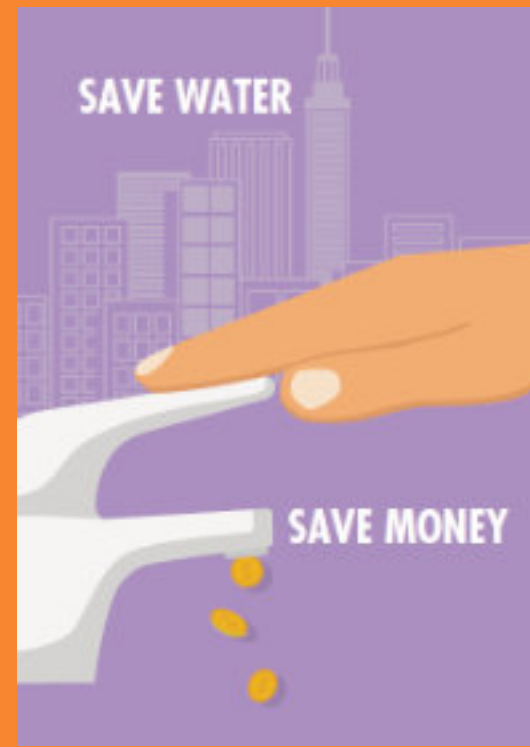
# **WET Rebate**

**Receive up to \$50,000 for the installation  
of water efficient technology!**



# Rebate Benefits

- Modernize your facility
- Save money on your water bill
- Show your water conservation leadership





[valleywater.org/wet-rebate](http://valleywater.org/wet-rebate)



**Neeta Bijoor, PhD**  
**[nbijoor@valleywater.org](mailto:nbijoor@valleywater.org)**





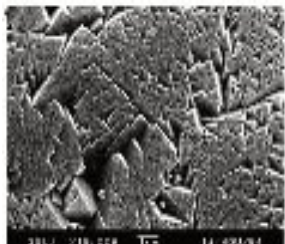
**AKWA MAG**



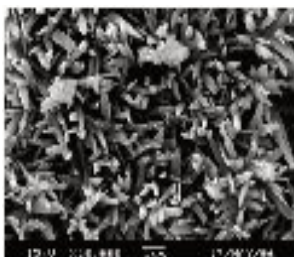
# What?

**Peculiar phenomenon:** Magnetohydrodynamic  
Neutralizes calcium hardness at the molecular level

## CaCO<sub>3</sub> crystals

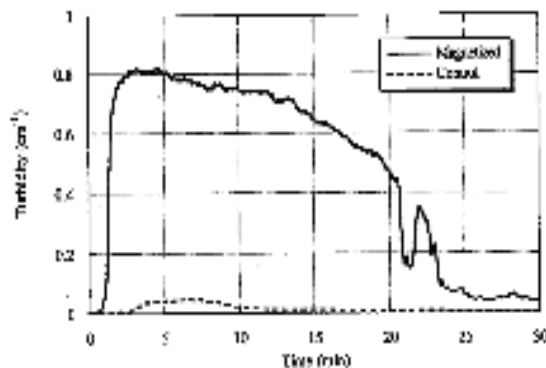


Calcite hardness  
limescale build up

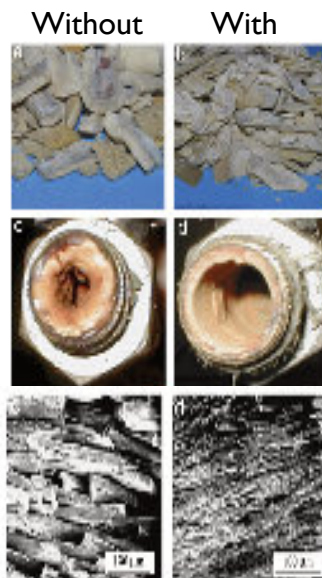


Aragonite powdery  
non stick

## Magnetohydrodynamic force induces aragonite crystallization



## Performance in boiler





# Applications

**Residential** – Industrial – **Agricultural**



Recycle nutrient-dense waste  
to feed hydroponic plants

**Industrial:** RO with 90% less water wasted

- 90% yield: successful operation at semi, drinking
- 10% reject waste: environmentally sustainable
- Economically viable for cooling towers, boilers

**Residential:** low CoO, zero maintenance

- Positive feedback from long term customers
- High initial cost, but lowest cost of ownership
- No transporting salt bags

**Aquaponic RAS:** two crops, flexible location

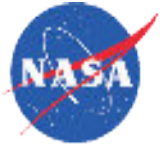
- Aquaculture: faster growth, healthy fish
- Hydroponic: plants recycle nutritious waste
- Urban farming: Close-loop, zero water discharge



# Why AkwaMag?

Designed by a magnetic research engineer

Developed for reliability: **patent pending**



Innovation Showcase



# gachina

landscape management



